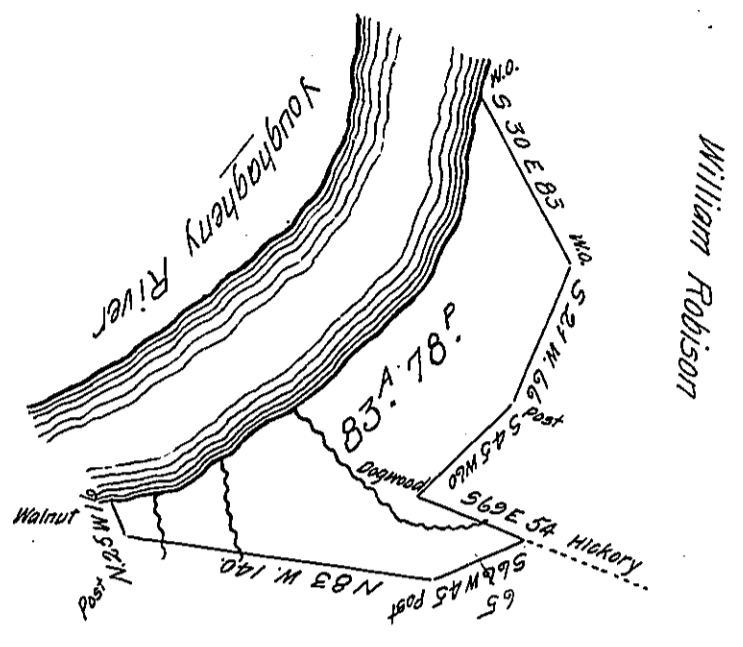


66
H7-283
2-148

- Courses down the River
- 1 N 80 E 26 P^s
 - 2 N 58 E 70
 - 3 N 47 E 73
 - 4 N 28½ E 42
 - 5 N 5 E 44
 - 6 N. 16. W. 11 to Wa.K.



WIDOW GOUTIER
C 77-70

S. V. V. V. V. V.

A Draught of a Survey executed August 17th 1810 on a Warrant granted to John Mc-
Knight dated March 3^d 1810 for 116 as Situated on Yough. River Containing Eighty
three acres & Seventy eight Perches & Allowance of Six Per cent for Roads and Called
Millford & C.

David Goom D.S.A.C.

To Gen! Andrew Porter Esq. }
S. General of Pen.^s }
Lancaster

IN TESTIMONY that the above is a copy of the original remaining on file in
the Department of Internal Affairs of Pennsylvania, made
conformably to an Act of Assembly approved the 16th day of
February, 1833, I have hereunto set my Hand and caused
the Seal of said Department to be affixed at Harrisburg,
this.....eighth..... day of.....February..... 1906.

George R. Brown
Secretary of Internal Affairs.